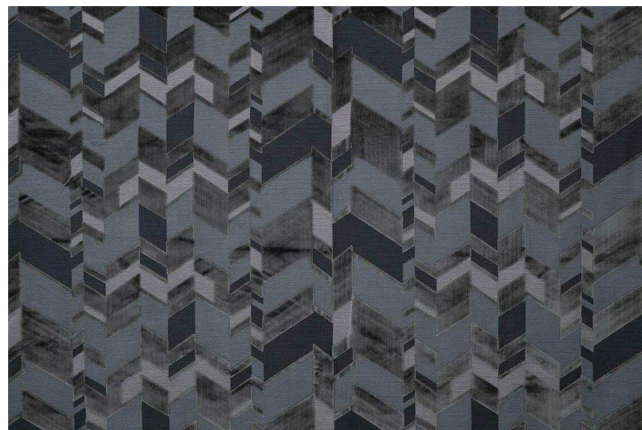




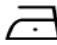




## J4054EAT - CAMOUFLAGE | 001 - Ardesia

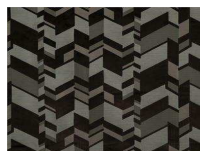
ARTICLE	J4054EAT - CAMOUFLAC
COLOR	001 - Ardesia
TYPE	jacquard
PATTERN	Geometrics
COMPOSITION	89% viscose, 11% polyes
WIDTH	141 cm / 55 inch
WEIGHT	644 gr / 22 oz
REPEAT	



USED FOR	upholstery curtain
CARE	    
COLLECTION	MAESTRA

**CAMOUFLAGE:** exclusive furnishing fabric that combines the geometry of the design with the softness of the velvet. Unusual interpretation of a theme used in fashion, but rarely applied to interior design. The velvet is designed by by A. Castrignano.

### COLORS



002-Army



003-Petrol



004-Ruggine



005-Ametista