



J3266 - ANDROMEDA | 001 - Deserto

ARTICLE	J3266 - ANDROMEDA
COLOR	001 - Deserto
TYPE	jacquard
PATTERN	Weaves
COMPOSITION	43% polyester, 27% poly
WIDTH	148 cm / 58 inch
WEIGHT	503 gr / 17 oz
REPEAT	
USED FOR	upholstery curtain
CARE	
COLLECTION	STELLA

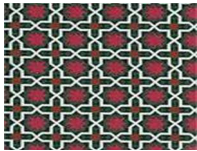


ANDROMEDA is a small jacquard patterns inspired by moroccan pottery, made of yarns that make it ideal for the use in high resistant strength upholstery.

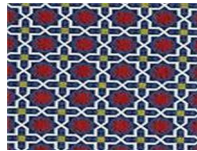
COLORS



002-Sole



003-Smeraldo



004-Blu