




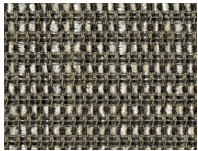
J2999 - FLORINDA | 004 - Platino

ARTICLE	J2999 - FLORINDA
COLOR	004 - Platino
TYPE	bouclé
PATTERN	Weaves
COMPOSITION	62% viscose, 30% cotton,
WIDTH	144 cm / 56 inch
WEIGHT	1278 gr / 45 oz
REPEAT	
USED FOR	upholstery
CARE	
COLLECTION	DIVA



FLORINDA: this linen fabric is inspired by the woolen tweed celebrated by "chanel". This unique and innovative linen fabric is especially studied for upholstery. It has an incredibly firmness but very soft hand.

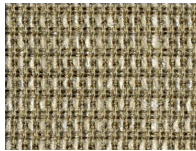
COLORS



001-Onice



002-Argento



003-Oro