



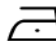
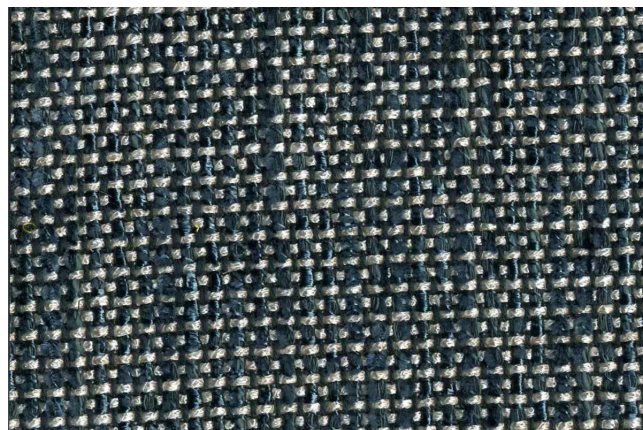




J2995 - LIZ | 009 - Alga

ARTICLE	J2995 - LIZ
COLOR	009 - Alga
TYPE	bouclé
PATTERN	Weaves
COMPOSITION	58% viscose, 32% cotton,
WIDTH	138 cm / 54 inch
WEIGHT	1156 gr / 40 oz
REPEAT	
USED FOR	upholstery
CARE	    
COLLECTION	DIVA



LIZ: this linen fabric is inspired by the woolen tweed celebrated by "chanel". This unique and innovative linen fabric is especially studied for upholstery. It has an incredibly firmness but very soft hand.

COLORS



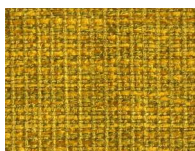
001-Marron glace'



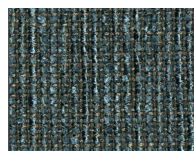
002-Pietra



003-Cuoio



004-Zafferano



005-Petrolio



006-Fuoco



007-Ebano



008-Sole